

ANNEXURE A – Bill of Quantities

Designation	Req.	UoM	Qty	Rates		ADMIN O/HEAD ZAR	PROFIT ZAR	TOTAL RATE ZAR	UNITS							Total Price (Excl'g VAT) ZAR	
				Month ZAR	Day ZAR				Feb-21	Mar-21	Apr-21	May-21	Jun-21	Jul-21	Total		
TIME RELATED PRICES																	
Project Resources:																	
Project Manager	1	Months	4.8	150,000		11,250	11,250	172,500	0.5	1.0	1.0	1.0	1.0	1.0	0.3	4.8	802,125
Safety Officer	1	Months	4.8	80,000		6,000	6,000	92,000	0.5	1.0	1.0	1.0	1.0	1.0	0.3	4.8	427,800
Planner	1	Months	4.8	65,000		4,875	4,875	74,750	0.5	1.0	1.0	1.0	1.0	1.0	0.3	4.8	347,588
Cost Administrator	1	Months	1.8	65,000		4,875	4,875	74,750	0.3	0.3	0.3	0.3	0.3	0.3	0.3	1.8	130,163
Storeman	1	Months	4.0	20,000		1,500	1,500	23,000	0.0	1.0	1.0	1.0	1.0	1.0	0.0	4.0	89,000
Driver (Truck)	1	Months	4.8	9,600		720	720	11,040	0.5	1.0	1.0	1.0	1.0	1.0	0.3	4.8	51,336
Expediting and Logistics	1	Months	2.8	75,000		5,625	5,625	86,250	0.0	0.5	1.0	1.0	1.0	0.3	2.8	234,188	
Sub Total:						34,845	34,845		197,570	438,840	481,965	450,533	394,095	119,196	2,082,199	2,082,199	
Construction Team : Mechanical																	
Rigger	1	Days	108.0	2,956		222	222	3,399	5.0	15.0	26.0	26.0	26.0	10.0	108.0	349,843	
Rigger Assistant	3	Days	72.0	1,662		125	125	1,911	5.0	15.0	26.0	8.7	8.7	8.7	72.0	396,636	
Artisans	5	Days	98.0	2,956		222	222	3,399	5.0	15.0	26.0	26.0	15.6	10.4	98.0	1,590,771	
Welder	1	Days	81.0	2,956		222	222	3,399	0.0	0.0	26.0	26.0	26.0	3.0	81.0	258,059	
General Workers	9	Days	82.2	525		39	39	604	0.0	15.0	26.0	26.0	13.0	2.2	82.2	423,741	
Sub Total:						829	829		130,652	473,461	849,764	756,858	525,586	282,730	3,019,050	3,019,050	
Construction Team : Civils																	
Site Agent	1	Months	4.0	108,075		8,106	0	116,181	0.0	1.0	1.0	1.0	1.0	0.5	4.0	464,723	
Foreman	1	Days	78.0	3,884		291	0	4,175	0.0	0.0	26.0	26.0	26.0	26.0	78.0	325,673	
Shutter Hand/Steel Fixers/Concrete hands etc	2	Days	104.0	924		69	0	993	0.0	26.0	26.0	26.0	26.0	26.0	104.0	206,606	
Semi-Skilled	2	Days	52.0	924		69	0	993	0.0	0.0	0.0	26.0	26.0	26.0	52.0	103,303	
Sub Total:						8,466	0		0	167,832	276,390	328,042	328,042	0	1,100,306	1,100,306	
Plant:																	
Crane - 55 tonner	1	Month	1	326,490		32,649	0	359,139	0.0	0.5	1.0	1.0	1.0	0.5	4.0	1,436,554	
Telehandler	1	Month	1	92,136		9,214	0	101,350	0.5	1.0	1.0	1.0	1.0	0.5	5.0	506,750	
Cherry Picker	1	Month	1	105,052		10,505	0	115,557	0.0	0.5	1.0	1.0	1.0	0.5	4.0	462,229	
8-Tonner - High up Generator (40 Kva)	1	Month	1	157,162		15,716	0	172,878	0.5	1.0	1.0	1.0	1.0	0.5	5.0	864,388	
Fuel	1	litre/mth	10,000	16		830	0	913	10.0	30.0	30.0	30.0	30.0	15.0	145	132,385	
Diesel Bowser for above	1	month	1	9,500		950	0	10,450	0.5	1.0	1.0	0.0	0.0	1.800	16,400	288,640	
Sub Total:						69,119	0		183,149	605,736	843,084	832,634	832,634	419,837	3,717,072	3,717,072	
Transport:																	
LDV	2	month	2	1,500		150	0	3,300	10.0	30.0	30.0	30.0	30.0	10.0	140.0	462,000	
Vehicle Hire (Bus) - 22 Seater	1	month	1	2,435		244	0	2,679	5.0	30.0	30.0	30.0	30.0	10.0	135.0	361,598	
Sub Total:						394	0		46,393	179,355	179,355	179,355	179,355	59,785	823,598	823,598	
Site Establishment:																	
Office/Boardroom/Store	1		1	566,634		56,663	0	623,297	1.0	0.0	0.0	0.0	0.0	0.0	1.0	623,297	
Abolition - Male/Female 6*2,4m	1		1	130,115		13,012	0	143,127	1.0	0.0	0.0	0.0	0.0	0.0	1.0	143,127	
Internet Comms/Cell phones	1		1	5,000		500	0	5,500	1.0	1.0	1.0	1.0	1.0	0.5	5.5	30,250	
Sub Total:						70,175	0		771,924	5,500	5,500	5,500	5,500	2,750	796,674	796,674	
Miscellaneous Items:																	
Transport (Site Visit/Meetings/Rotations)	1	Set	1	4,000		400	0	4,400	2.0	6.0	11.0	10.0	10.0	5.0	44.0	193,600	
Sub Total:						35,674	0		8,800	26,400	48,400	44,000	44,000	22,000	193,600	193,600	
Total Time Related Price:						183,827	71,348	0	1,338,487	1,897,124	2,684,457	2,596,921	2,309,211	906,298	11,732,497	11,732,497	

Handwritten signature and date: 17/02/2021

Designation	Req.	UoM	Qty	Rates		ADMIN O/HEAD	PROFIT	TOTAL RATE	UNITS							Total Price ZAR	ADMIN O/HEAD	PROFIT	TOTAL RATE		
				Month ZAR	Day ZAR				10,00%	0,00%	ZAR	Feb-21	Mar-21	Apr-21	May-21					Jun-21	Jul-21
FIXED PRICES																					
Commercial Requirements:																					
Liability Insurance	1	sum	1		10,950		0	12,045	1.0	0.0	0.0	0.0	0.0	0.0	0.0	1.0	12,045	1,807	1,095	1,095	
Medicals/Police Clearance	1	ea.	1		2,500		0	2,875	19.0	0.0	0.0	0.0	0.0	0.0	0.0	19.0	54,625	8,194	4,750	4,750	
Sub Total:							0	14,920	66,670	0	0	0	0	0	0	66,670	66,670	10,001	5,845	5,845	
Safety Requirements:																					
PPE	1	ea.	1		2,550		0	2,805	19.0	0.0	0.0	0.0	0.0	0.0	0.0	19.0	53,295	7,994	4,845	4,845	
Safety Equipment	1	sum	1		110,000		0	121,000	1.0	0.0	0.0	0.0	0.0	0.0	0.0	1.0	121,000	18,150	11,000	11,000	
Sub Total:							0	11,255	174,295	0	0	0	0	0	0	174,295	174,295	26,144	15,845	15,845	
Site Establishment:																					
Transportation	1	Set	1		16,850		0	18,535	5.0	0.0	0.0	0.0	0.0	0.0	5.0	92,675	13,901	8,425	8,425		
Site Office Miscellaneous - Paving/Sewer and Sewerage/Electrical Reticulation/Water Storage	1		1		75,000		0	82,500	1.0	0.0	0.0	0.0	0.0	0.0	1.0	82,500	12,375	7,500	7,500		
Sub Total:							0	9,185	175,175	0	0	0	0	0	0	175,175	175,175	26,276	15,925	15,925	
Plant and Equipment:																					
Crane Mob and De-Mob	2	no	1		12,500		0	13,750	0.0	1.0	0.0	0.0	0.0	1.0	2.0	27,500	4,125	2,500	2,500		
Telehandler	2	no	1		20,000		0	22,000	0.0	1.0	0.0	0.0	0.0	0.0	2.0	44,000	6,600	4,000	4,000		
Cherry Picker Mob and Demob	2	no	1		15,000		0	16,500	0.0	1.0	0.0	0.0	0.0	1.0	33,000	4,950	3,000	3,000			
8-Tonner - High up	2	no	1		17,500		0	19,250	1.0	0.0	0.0	0.0	1.0	2.0	38,500	5,775	3,500	3,500			
Tools, Welding Equipment, Consumables, etc	1	sum	1		576,687		0	634,356	1.0	0.0	0.0	0.0	0.0	1.0	634,356	95,153	57,669	57,669			
Pump Repairs	1	sum	1		399,980		0	439,978	0.0	0.0	1.0	0.0	0.0	0.0	1.0	439,978	65,997	39,998	39,998		
Extra over - Purchasing	1	sum	1		206,107		0	226,718	0.0	0.0	1.0	0.0	0.0	0.0	1.0	226,718	34,008	20,611	20,611		
Laptops, Software and Licenses	1	no	1		8,500		0	9,350	2.0	0.0	0.0	0.0	0.0	0.0	2.0	18,700	2,805	1,700	1,700		
Furniture/Printer/Stationary/Water Coolers/Stationary	1	Once Off	1		165,000		0	181,500	1.0	0.0	0.0	0.0	0.0	0.0	1.0	181,500	27,225	16,500	16,500		
Store and Office Purchases	1	Once Off	1		11,000		0	12,100	1.0	0.0	0.0	0.0	0.0	0.0	1.0	12,100	1,815	1,100	1,100		
Sub Total:							0	143,227	865,906	52,250	666,696	22,000	49,500	0	1,656,352	1,656,352	248,453	150,577	150,577		
BOQ - Civils Estimate																					
MCC Room Foundations																					
Concrete - 30 Mpa	1	m³	4		2,421		182	2,784	0.0	0.0	4.0	0.0	0.0	0.0	4.0	11,137	1,670	726	726		
Formwork around Plinths	1	m²	12.8		210		16	242	0.0	0.0	12.8	0.0	0.0	0.0	12.8	3,091	464	202	202		
Foundation - Rebar	1	kg	240		50		4	58	0.0	0.0	240.0	0.0	0.0	0.0	240.0	13,800	2,070	900	900		
Return Water Dam																					
Concrete Slab for Pumps	1	m³	8		2,421		182	2,784	0.0	0.0	0.0	8.0	0.0	0.0	8.0	22,273	3,341	1,453	1,453		
Formwork around Slab	1	m²	40		210		16	242	0.0	0.0	0.0	40.0	0.0	0.0	40.0	9,660	1,449	630	630		
Ref 193 Wire Mesh	1	m²	40		50		4	58	0.0	0.0	0.0	40.0	0.0	0.0	40.0	2,300	345	150	150		
Slimes Dam																					
Concrete Slab for Pumps	1	m³	8		2,421		182	2,784	0.0	0.0	0.0	8.0	0.0	0.0	8.0	22,273	3,341	1,453	1,453		
Formwork around Slab	1	m²	40		210		16	242	0.0	0.0	0.0	40.0	0.0	0.0	40.0	9,660	1,449	630	630		
Ref 193 Wire Mesh	1	m²	40		50		4	58	0.0	0.0	0.0	40.0	0.0	0.0	40.0	2,300	345	150	150		
Sub Total:							603	603	0	0	28,028	68,466	0	0	96,494	96,494	14,474	12,586	6,293		
Total Fixed Price:							165,616	603	14,920	1,282,046	52,250	694,724	90,466	49,500	0	2,168,986	2,168,986	325,348	200,779	0	194,486

Handwritten signatures and initials at the bottom of the page.

CONTRACT PRICE SUMMARY		ADMIN	PROFIT								Total Price
		O/HEAD	7.50%	Feb-21	Mar-21	Apr-21	May-21	Jun-21	Jul-21	ZAR	
Total Time Related Price:		183,827	71,348	1,338,487	1,897,124	2,684,457	2,596,921	2,309,211	906,298	11,732,497	
Total Fixed Price:		165,616	603	1,282,046	52,250	694,724	90,466	49,500	0	2,168,986	
TOTAL CONTRACT PRICE (EXCL. VAT)		349,443	71,951	2,620,533	1,949,374	3,379,181	2,687,387	2,358,711	906,298	13,901,483	
V.A.T		52,416	10,793	393,080	292,406	506,877	403,108	353,807	135,945	2,085,222	
TOTAL CONTRACT PRICE (INCL. VAT)		401,859	82,744	3,013,613	2,241,780	3,886,058	3,090,495	2,712,518	1,042,242	15,986,706	

Handwritten signature and initials: *BNV*

ANNEXURE A – Bill of Quantities

Data date : 19-Apr-21

KAREEVEI

19-Apr-21 13:27

Activity ID	Activity Name	Original Duration	Remaining Duration	Start (forecast)	Actual Start	Finish (forecast)	Actual Finish	Jan	Feb	Mar	Apr	May	Jun	Jul	Aug	Sep	Oct	Nov	Dec	Jan	Feb	Mar	Apr	May	Jun	Jul	
KAREEVEI MINING																											
KAREEVEI SUMMARY (WET PLANT AREA) excl dams																											
A5610	Design	145	96	11-Feb-21 A	11-Feb-21	02-Aug-21																					
A5620	Detailing	5	10	11-Feb-21 A	11-Feb-21	28-Apr-21																					
A5630	Procurement of all material	5	15	09-Mar-21 A	09-Mar-21	04-May-21																					
A5640	Fabrication process (Hanson)	5	20	09-Mar-21 A	09-Mar-21	10-May-21																					
A5650	Painting process (Sohar)	54	37	15-Mar-21 A	15-Mar-21	28-May-21																					
A5660	CMI	5	15	11-Feb-21 A	11-Feb-21	05-May-21																					
A5670	Construction from stock pile to first 2 pans (Line 1) up to Cold commissioning	5	80	12-Mar-21 A	12-Mar-21	26-Jul-21																					
A5672	Construction from stock pile to first 2 pans (Line 1) up to Hot commissioning	5	89	12-Mar-21 A	12-Mar-21	26-Jul-21																					
A5680	Construction from stock pile to repaired pans (Line 2) up to Cold commissioning	65	65	01-May-21	12-Mar-21	22-Jul-21																					
A5682	Construction from stock pile to repaired pans (Line 2) up to Hot commissioning	122	87	12-Mar-21 A	12-Mar-21	22-Jul-21																					
A5690	Final inspections and hand over (incl databases)	24	96	15-Mar-21 A	15-Mar-21	02-Aug-21																					
GENERAL																											
DRAWINGS RECEIPT FROM CLIENT																											
CONTRACTUAL AGREEMENTS																											
A1210	CMI contractor	0	0	11-Feb-21 A	11-Feb-21	09-Apr-21																					
A1220	Steel fabricator/painter contractor	0	0	11-Feb-21 A	11-Feb-21	16-Apr-21																					
A1230	Mechanical electrical contractor (electrical contractor to be appointed in progress)	0	0	16-Apr-21 A	16-Apr-21																						
A1250	Construction contractor (advanced warning 0025 signing of contract o/s)	0	0	20-Apr-21																							
A2380	DMS Pan plant contractor (TBA) with advanced warning 0026	0	0	19-Apr-21																							
RISK / ADVANCED WARNINGS																											
INTERMEDIATE STOCK PILE																											
TUNNEL CHUTES																											
PRE ENGINEERING																											
PROCUREMENT																											
FABRICATION																											
PAINTING																											
DELIVERY TO SITE																											
CONVEYORS																											
TROUSER CHUTE WITH SUPP STRUCTURE WALKWAYS/GUARDS/HANDRAIL																											
(STEELWORK) CONVEYOR																											
31290 CW07																											
PRE ENGINEERING																											
A1070	Receipt of drawings (Design)	1	0	11-Feb-21 A	11-Feb-21	12-Feb-21																					
A1080	Detailing of drawings	3	0	11-Feb-21 A	11-Feb-21	15-Feb-21																					
A1090	Send for approval	2	0	15-Feb-21 A	15-Feb-21	24-Feb-21																					
A1240	Skirting design as at 29/3	29	10	29-Mar-21 A	29-Mar-21	28-Apr-21																					
A2000	Handrailing /grating as at 29/3	5	0	29-Mar-21 A	29-Mar-21	19-Apr-21																					
A5350	Re design of head	10	10	29-Mar-21 A	29-Mar-21	28-Apr-21																					
A5760	Head guard and drive arrangement steel design	10	10	19-Apr-21		28-Apr-21																					
A5810	Inconed angle of conveyor (total completion of feeder system)	5	10	09-Apr-21 A	09-Apr-21	28-Apr-21																					
A5860	Trouser leg chute with supp structure and platform	5	39	16-Apr-21 A	16-Apr-21	31-May-21																					
PROCUREMENT																											
A3410	Procurement of material	3	48	16-Feb-21 A	16-Feb-21	09-Jun-21																					
A3420	Delay of material	1	44	16-Feb-21 A	16-Feb-21	04-Jun-21																					
FABRICATION																											
A1100	Preparation of material	5	50	17-Feb-21 A	17-Feb-21	15-Jun-21																					
A1110	Assembly of material	5	53	18-Feb-21 A	18-Feb-21	15-Jun-21																					

■ Actual Level of Effort
 ■ Remaining Work
 ■ Critical Remaining Work
 ◆ Start Constraint
 ◆ Milestone

Date	Revision	Checked	Approved
19-Apr-21	PROGRAM PROGRESS	MG	GG

Data date: 19-Apr-21

KAREVELEI MINING
Program progress
as at 19 April 2021

19-Apr-21 13:27

Activity ID	Activity Name	Original Duration	Remaining Duration	Start (forecast)	Actual Start	Finish (forecast)	Actual Finish	2021												Date	Revision	Checked	Approved
								Jan	Feb	Mar	Apr	May	Jun	Jul	Aug	Sep	Oct	Nov	Dec				
30980-CV08-B																							
PRE ENGINEERING																							
A1270	Receipt of drawings (Design)	1	0	11-Feb-21 A	11-Feb-21	12-Feb-21 A	12-Feb-21																
A1280	Detailing of drawings	3	0	11-Feb-21 A	11-Feb-21	15-Feb-21 A	15-Feb-21																
A1290	Send for approval	2	0	15-Feb-21 A	15-Feb-21	24-Feb-21 A	24-Feb-21																
A5360	Skilling/guards design as at 29/3	29	10	29-Mar-21 A	29-Mar-21	28-Apr-21	28-Apr-21																
A5370	Head guard drive arrangement steel as at 29/3	29	10	29-Mar-21 A	29-Mar-21	28-Apr-21	28-Apr-21																
PROCURMENT																							
A3430	Procurement of material	3	19	16-Feb-21 A	16-Feb-21	04-May-21																	
A3440	Delivery of material	1	12	16-Feb-21 A	16-Feb-21	30-Apr-21																	
FABRICATION																							
A1300	Preparation of material	20	28	17-Feb-21 A	17-Feb-21	14-May-21																	
A1310	Assembly of material	5	18	17-Feb-21 A	17-Feb-21	07-May-21																	
A1320	Welding of material	5	20	18-Feb-21 A	18-Feb-21	10-May-21																	
A1330	Fettle and clean	5	21	18-Feb-21 A	18-Feb-21	11-May-21																	
A1340	Inspection and release	5	24	18-Feb-21 A	18-Feb-21	13-May-21																	
PAINTING																							
A1350	Receipt of material	61	30	12-Mar-21 A	12-Mar-21	20-May-21																	
A1360	Paint to spec	1	27	12-Mar-21 A	12-Mar-21	17-May-21																	
A1370	Inspection and release to site (walkways) & splice plates & trussles support channelmesh /ra	6	29	12-Mar-21 A	12-Mar-21	19-May-21																	
A1390	Paint & inspection and release to site (head and tail frames)	1	30	15-Mar-21 A	15-Mar-21	20-May-21																	
DELIVERY TO SITE																							
A1380	Delivery of material to site (walkways) & splice plates & trussles support channelmesh /randr	19	0	15-Mar-21 A	15-Mar-21	19-Apr-21 A	07-Apr-21																
A4450	Delivery of material to site head and tail frames 8B	1	0	15-Mar-21 A	15-Mar-21	19-Apr-21	12-Apr-21																
30980-CV08-A																							
PRE ENGINEERING																							
A1390	Receipt of drawings (Design)	90	10	22-Feb-21 A	22-Feb-21	28-Apr-21	23-Feb-21																
A1400	Detailing of drawings	1	0	22-Feb-21 A	22-Feb-21	23-Feb-21 A	26-Feb-21																
A1410	Send for approval	3	0	24-Feb-21 A	24-Feb-21	26-Feb-21 A	26-Feb-21																
A5380	Skilling design as at 29/3	2	0	26-Feb-21 A	26-Feb-21	06-Apr-21 A	05-Apr-21																
A6390	Head guard and tail guards as at 29/3	29	10	29-Mar-21 A	29-Mar-21	28-Apr-21																	
A6770	Head guard drive arrangement steel as at 29/3	29	10	29-Mar-21 A	29-Mar-21	28-Apr-21																	
PROCURMENT																							
A3450	Procurement of material	3	16	26-Feb-21 A	26-Feb-21	04-May-21																	
A3460	Delivery of material	1	12	26-Feb-21 A	26-Feb-21	30-Apr-21																	
FABRICATION																							
A1420	Preparation of material	37	25	26-Feb-21 A	26-Feb-21	14-May-21																	
A1430	Assembly of material	5	18	26-Feb-21 A	26-Feb-21	07-May-21																	
A1440	Welding of material	5	20	01-Mar-21 A	01-Mar-21	10-May-21																	
A1450	Fettle and clean	5	24	03-Mar-21 A	03-Mar-21	13-May-21																	
A1460	Inspection and release	5	25	04-Mar-21 A	04-Mar-21	14-May-21																	
PAINTING																							
A1470	Receipt of material	58	30	10-Mar-21 A	10-Mar-21	20-May-21																	
A1480	Paint to spec	1	27	10-Mar-21 A	10-Mar-21	17-May-21																	
A1490	Inspection and release to site (walkways) & splice plates & trussles support channelmesh /ra	6	29	11-Mar-21 A	11-Mar-21	19-May-21																	
A4400	Paint & inspection and release to site (head and tail frames)	1	1	17-Mar-21 A	17-Mar-21	20-May-21																	
DELIVERY TO SITE																							
A4400	Paint & inspection and release to site (head and tail frames)	10	0	05-Apr-21 A	05-Apr-21	07-Apr-21																	

Actual Level of Effort Remaining Work Critical Remaining Work Start Constraint Milestone

Date 19-Apr-21 Revision PROGRAM PROGRESS Checked M/G Approved G/G

Handwritten initials and signature at the bottom left of the page.

Data date: 19-Apr-21

KAREEVELEI MINING
 Program progress
 as at 19 April 2021

19-Apr-21 13:27

ActivityID	Activity Name	Original Duration	Remaining Duration	Start (forecast)		Actual Start	Finish (forecast)	Actual Finish	2021												2022					
				Jan	Feb				Mar	Apr	May	Jun	Jul	Aug	Sep	Oct	Nov	Dec	Jan	Feb	Mar	Apr	May	Jun	Jul	
50710 - CV 10 A																										
PRE ENGINEERING																										
A1870	Receipt of drawings	1	0	22-Feb-21	22-Feb-21	22-Feb-21	22-Feb-21	22-Feb-21																		
A1880	Detailing of drawings	3	0	24-Feb-21	24-Feb-21	24-Feb-21	24-Feb-21	24-Feb-21																		
A1890	Send for approval	2	0	26-Feb-21	26-Feb-21	26-Feb-21	26-Feb-21	26-Feb-21																		
A5460	Skirting design as at 29/3	29	10	29-Mar-21	29-Mar-21	29-Mar-21	29-Mar-21	29-Mar-21																		
A5470	Head guard and tail guards as at 29/3	29	8	29-Mar-21	29-Mar-21	29-Mar-21	29-Mar-21	29-Mar-21																		
A5790	Head guard drive arrangement steel as at 29/3	29	10	29-Mar-21	29-Mar-21	29-Mar-21	29-Mar-21	29-Mar-21																		
PROCUREMENT																										
A3530	Procurement of material	3	19	26-Feb-21	26-Feb-21	26-Feb-21	04-May-21																			
A3540	Delivery of material	2	12	26-Feb-21	26-Feb-21	26-Feb-21	04-May-21																			
FABRICATION																										
A1900	Preparation of material	5	18	26-Feb-21	26-Feb-21	26-Feb-21	07-May-21																			
A1910	Assembly of material	5	20	01-Mar-21	01-Mar-21	01-Mar-21	10-May-21																			
A1920	Welding of material	5	21	02-Mar-21	02-Mar-21	02-Mar-21	11-May-21																			
A1930	Fettle and clean	5	24	03-Mar-21	03-Mar-21	03-Mar-21	13-May-21																			
A1940	Inspection and release	5	25	04-Mar-21	04-Mar-21	04-Mar-21	14-May-21																			
PAINTING																										
A1950	Receipt of material	1	34	10-Mar-21	10-Mar-21	10-Mar-21	25-May-21																			
A1960	Paint to spec	6	33	11-Mar-21	11-Mar-21	11-Mar-21	24-May-21																			
A1970	Inspection and release to site (walkways) & splice plates & ties support channelmesh fra	1	1	17-Mar-21	17-Mar-21	17-Mar-21	25-May-21																			
A4440	Paint & inspection and release to site (head and tail frames)	10	0	05-Apr-21	05-Apr-21	05-Apr-21	06-Apr-21	06-Apr-21																		
DELIVERY TO SITE																										
A1980	Delivery of material to site (walkways) & splice plates & ties support channelmesh handr	1	1	22-Mar-21	22-Mar-21	22-Mar-21	26-May-21																			
A4500	Delivery of material to site head and tail frames 10 A	1	0	12-Apr-21	12-Apr-21	12-Apr-21	12-Apr-21	12-Apr-21																		
HANDRAILING																										
A4360	Fabrication and delivery & steps	13	10	15-Feb-21	15-Feb-21	15-Feb-21	28-Apr-21																			
A4370	Fabrication and delivery	26	26	29-Apr-21	29-Apr-21	29-Apr-21	27-May-21																			
GUARDS/SKIRTING																										
A3700	Receipt of material	1	0	17-Feb-21	17-Feb-21	17-Feb-21	17-Feb-21	17-Feb-21																		
A3710	Paint to spec	5	0	17-Feb-21	17-Feb-21	17-Feb-21	19-Feb-21	19-Feb-21																		
A3720	Inspection and release to site	1	1	19-Apr-21	19-Apr-21	19-Apr-21	19-Apr-21	19-Feb-21																		
DELIVERY TO SITE																										
A3840	Delivery of material to site BINS	2	2	12-Apr-21	12-Apr-21	12-Apr-21	21-Apr-21	21-Apr-21																		
DEMANTERING SCREEN UNDERPANS FOR FIRST LINE OF B																										
A3840	Delivery of material to site BINS	2	2	12-Apr-21	12-Apr-21	12-Apr-21	21-Apr-21	21-Apr-21																		
PRE ENGINEERING																										
A3840	Delivery of material to site BINS	2	2	12-Apr-21	12-Apr-21	12-Apr-21	21-Apr-21	21-Apr-21																		
A3840	Delivery of material to site BINS	2	2	12-Apr-21	12-Apr-21	12-Apr-21	21-Apr-21	21-Apr-21																		
A3840	Delivery of material to site BINS	2	2	12-Apr-21	12-Apr-21	12-Apr-21	21-Apr-21	21-Apr-21																		
A3840	Delivery of material to site BINS	2	2	12-Apr-21	12-Apr-21	12-Apr-21	21-Apr-21	21-Apr-21																		
A3840	Delivery of material to site BINS	2	2	12-Apr-21	12-Apr-21	12-Apr-21	21-Apr-21	21-Apr-21																		

Actual Level of Effort (Blue bar)

Remaining Work (Green bar)

Critical Remaining Work (Red bar)

Start Constraint (Triangle)

Milestone (Diamond)

4

Date: 19-Apr-21

Revision: PROGRAM PROGRESS

Checked: MG

Approved: GG

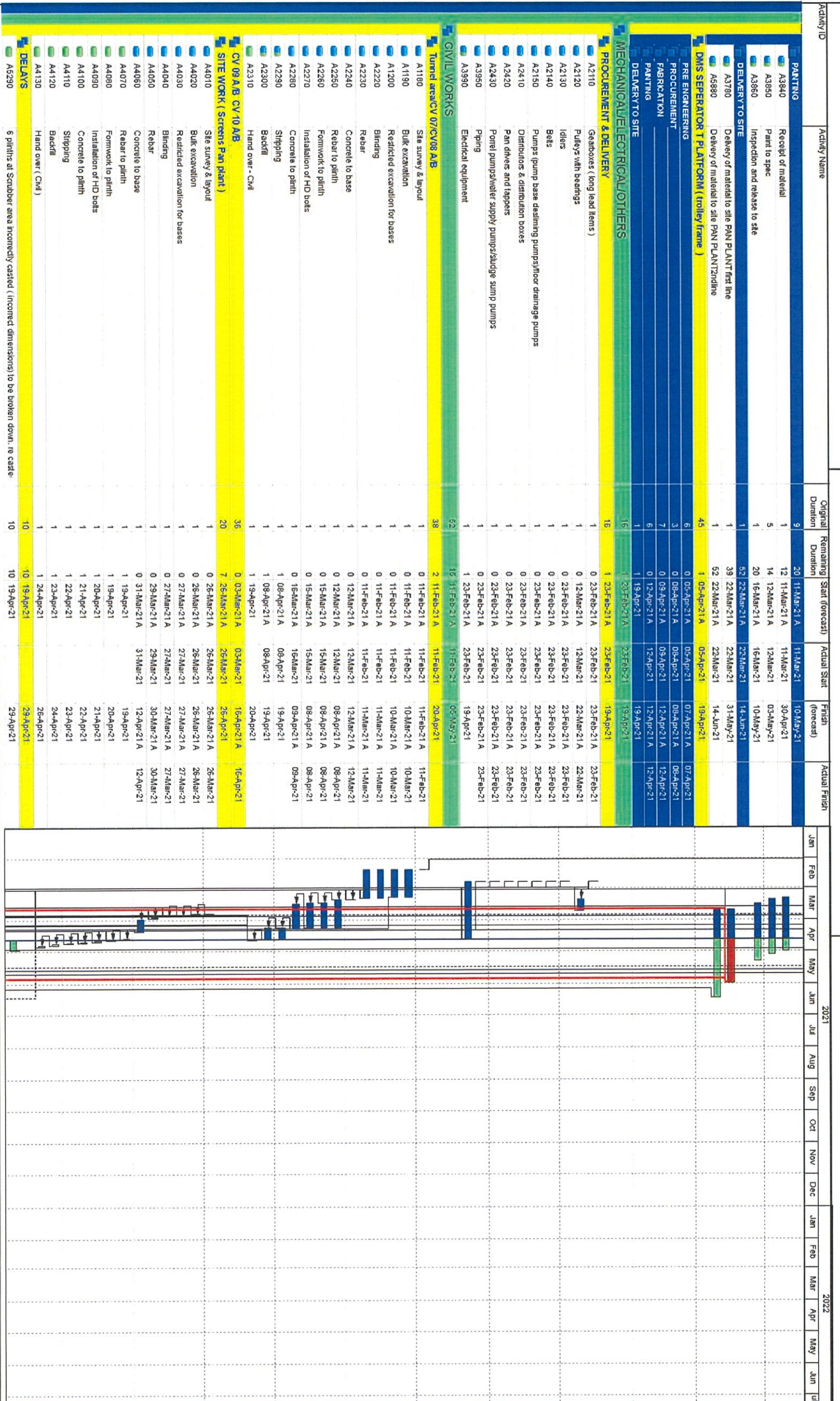
Handwritten signatures and initials: *SG*, *GG*

Data date: 19-Apr-21

KAREVELEI MINING
Program progress
as at 19 April 2021

19-Apr-21 13:27

Activity ID	Activity Name	Original Duration	Remaining Duration	Start (forecast)	Actual Start	Finish (forecast)	Actual Finish	Jan	Feb	Mar	Apr	May	Jun	Jul	Aug	Sep	Oct	Nov	Dec	Jan	Feb	Mar	Apr	May	Jun	Jul
<p>PAINTING</p> <p>A3840 Receipt of material A3850 Part to spec A3860 Inspection and release to site</p>																										
<p>DELIVERY TO SITE</p> <p>A3790 Delivery of material to site PAN PLANT first line A3680 Delivery of material to site PAN PLANT/induline</p>																										
<p>DMS SEPARATOR 1 PLATFORM (trolley frame)</p> <p>A5680</p>																										
<p>PRE ENGINEERING</p> <p>A6950</p>																										
<p>FABRICATION</p> <p>A6960</p>																										
<p>PAINTING</p> <p>A6970</p>																										
<p>DELIVERY TO SITE</p> <p>A6980</p>																										
<p>MECHANICAL/ELECTRICAL/OTHERS</p> <p>PROCUREMENT & DELIVERY</p> <p>A2110 Gearboxes (long lead items) A2120 Pulleys with bearings A2130 Idlers A2140 Belts A2150 Pumps (pump base desludging pumps/floor drainage pumps) A2410 Distributors & distribution boxes A2420 Pan drives and tappers A2430 Potrel pump/water supply pumps/sludge sump pumps A2950 Piping A3990 Electrical equipment</p>																										
<p>CIVIL WORKS</p> <p>Tunnel area/CV07/CV08 A/B</p> <p>A1180 Site survey & layout A1190 Bulk excavation A1200 Restricted excavation for bases A2220 Blinding A2230 Rebar A2240 Concrete to base A2250 Rebar to pith A2260 Formwork to pith A2270 Installation of HD bolts A2280 Concrete to pith A2290 Shipping A2300 Backfill A2310 Hand over - CIV</p>																										
<p>CV 09 A/B CV10 A/B</p> <p>SITE WORK (Screens Pan plant)</p> <p>A4010 Site survey & layout A4020 Bulk excavation A4030 Restricted excavation for bases A4040 Blinding A4050 Rebar A4060 Concrete to base A4070 Rebar to pith A4080 Formwork to pith A4090 Installation of HD bolts A4100 Concrete to pith A4110 Shipping A4120 Backfill A4130 Hand over (CIV)</p>																										
<p>DELAYS</p> <p>A5290 6 plinths at Scrubber area incorrectly casted (incorrect dimensions) to be broken down, re-cast</p>																										



Date	Revision	Checked	Approved
19-Apr-21	PROGRAM PROGRESS	MG	GG

Handwritten signatures and initials:

MG (Checked)

GG (Approved)

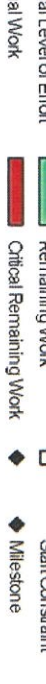
Handwritten scribbles and the number '7' are visible at the bottom of the page.

Date date: 19-Apr-21

KAREEVELEI MINING
Program progress
as at 19 April 2021

19-Apr-21 13:27

Activity ID	Activity Name	Original Duration	Remaining Duration	Start (forecast)	Actual Start	Finish (forecast)	Actual Finish	Jan	Feb	Mar	Apr	May	Jun	Jul	Aug	Sep	Oct	Nov	Dec	Jan	Feb	Mar	Apr	May	Jun	Jul	Aug	Sep	Oct	Nov	Dec
<p>CIVIL (grounding/sump)</p> <ul style="list-style-type: none"> A2580 Grouting 15 A3060 Sump/Drainage 15 <p>CONSTRUCTION (PREASSEMBLY)</p> <ul style="list-style-type: none"> A3130 Pre assembly of 31290 CV07 (start with walkway frames & splice plates) 67 A3140 Pre assembly of 30980 - CV 08B 12 A3150 Pre assembly of 30980 - CV08A 12 A3160 Pre assembly of 24485 - CV 09 B & scudder screen 12 A3170 Pre assembly of 24485 - CV 09A 12 A3180 Pre assembly of 50710 - CV 10 B 12 A3190 Pre assembly of 50710 - CV 10 A 12 A3200 Pre assembly of DMS plant structure 1 & 2 5 A4380 Pre assembly of DMS separator frame (holley) 5 <p>CONSTRUCTION (ONSITE)</p> <ul style="list-style-type: none"> MECHANICAL ITEMS RECEIVED ON SITE A3280 Receipt of mechanical items on site 1 TUNNEL AREA AND TROUSER CHUTE A2540 Installation of primary material (support structure /chutes 41 A2550 Installation of secondary material (chutes/ walkways/handrails /guards 2 A2560 Bolt up 1 A2570 Touch up and paint 1 MECHANICAL/ELECTRICAL For tunnel area A3070 Mechanical Installation/Electrical 5 31290 - CV 07 A2320 Installation of primary material (frames/struts) 23 A2590 Installation of secondary material (brackets/ walkways/handrails/piping 2 A2600 Bolt up 1 A2610 Touch up painting 1 A2620 Inspection and release 1 A2630 Hand over 1 MECHANICAL/ELECTRICAL CV 07 A3080 Mechanical Installation/Electrical 5 DELAYS A5270 Constant "Cleaning" of the Amco tunnel (delay difficult to measure) / Advanced warning 007 35 A5280 CV 07 Inconed angle of conveyor (design issue) / Advanced warning 0016 7 A5870 Trouser leg 5 30980-CV 08 -B A2640 Installation of primary material 24 A2650 Installation of secondary material 2 A2660 Bolt up 0 A2670 Touch up painting 1 A2680 Inspection and release 1 A2690 Hand over 1 30980 CV 08 -A A2700 Installation of primary material 33 A2710 Installation of secondary material 2 A2720 Bolt up 2 A2730 Touch up painting 1 A2740 Inspection and release 1 A2750 Hand over 1 MECHANICAL/ELECTRICAL CV 08A/B A3090 Mechanical Installation/Electrical 5 DEWATERING SCREEN UNDERPANS A5210 Installation of underpans 1 & 2 6 A5220 Mechanical / Electrical/pumps 1 																															



Actual Level of Effort (Blue bar)

Remaining Work (Green bar)

Critical Remaining Work (Red bar)

Start Constraint (Upward triangle)

Milestone (Diamond)

Date	Revision	Checked	Approved
19-Apr-21	PROGRAM PROGRESS	MG	GG

7

Handwritten signatures and initials, including what appears to be 'MG' and 'GG'.